

العمارة فى العصور الوسطى
(الرومانسيك - القوطى) (٤٠٠-١٤٠٠ م)

Architecture (Romanesque - Gothic)
(400-1400 CE)

Dr. Kamal Elgabalawy

THE REFERENCES TO MULTIPLE SOURCES ARE TEXT & FIGURES

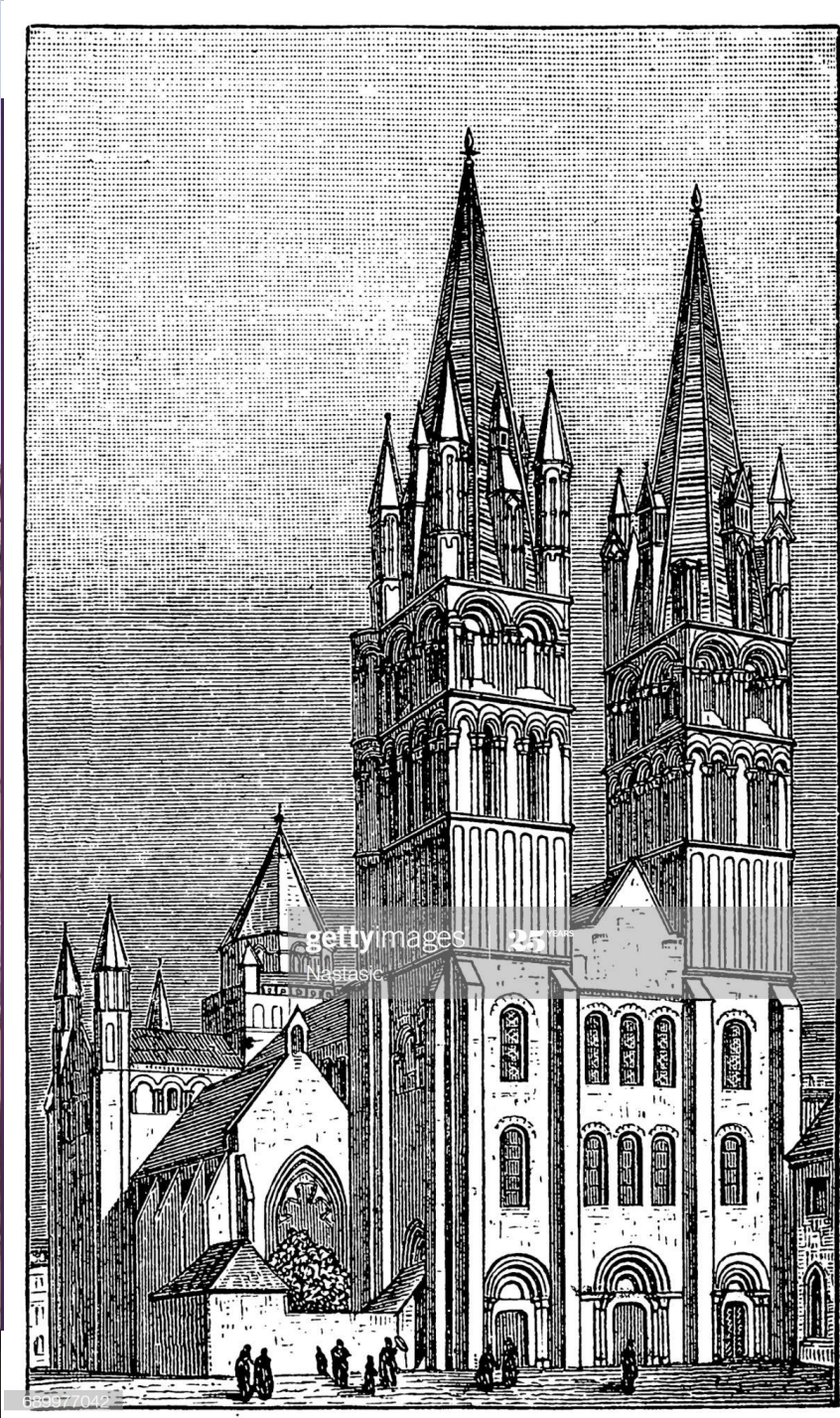
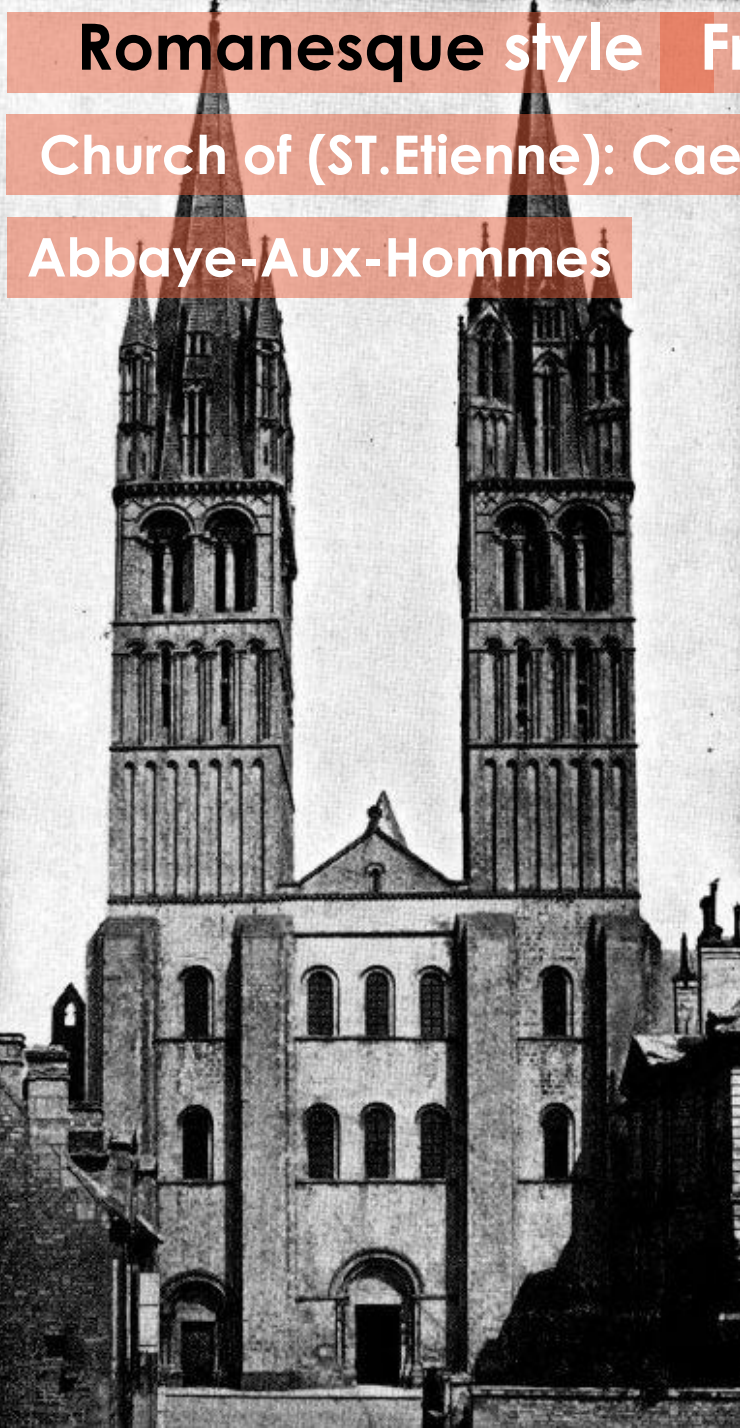
(SKETCHES, DRAWINGS, PICTURES, PHOTOS,...ETC.)

ALL THE RIGHTS BELONG TO ORIGINAL AUTHORS

Romanesque style France

Church of (St.Etienne): Caen

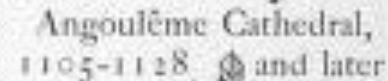
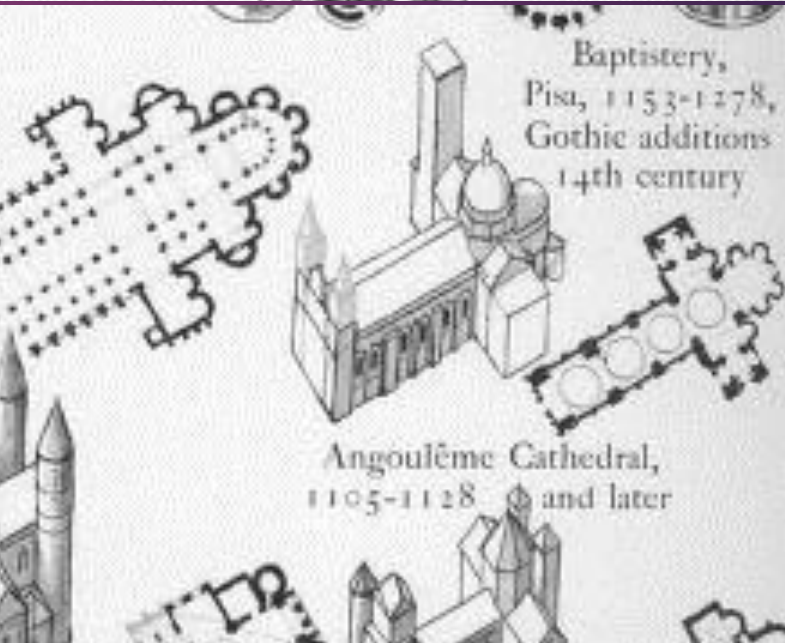
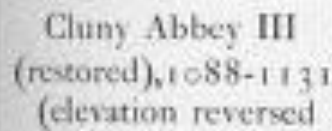
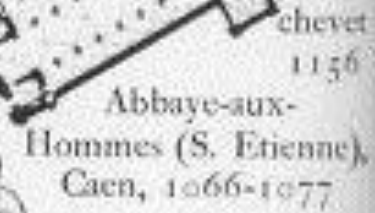
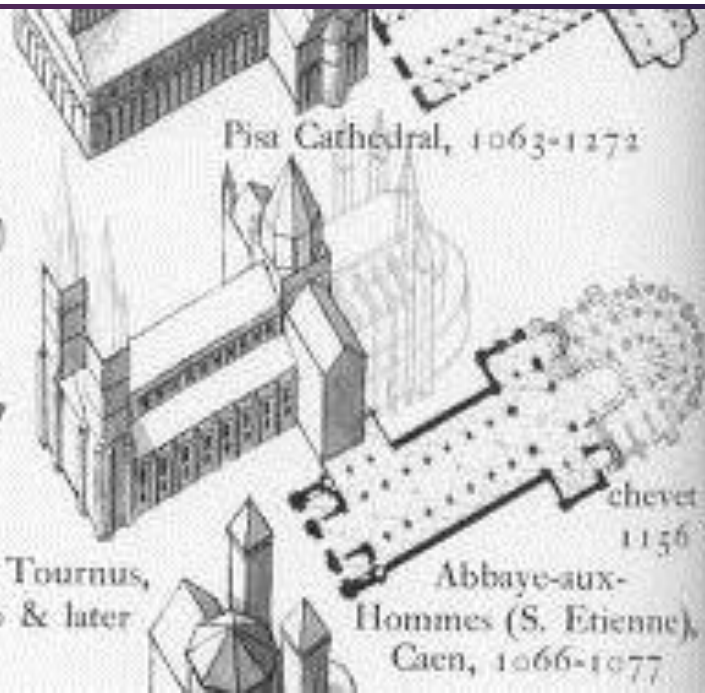
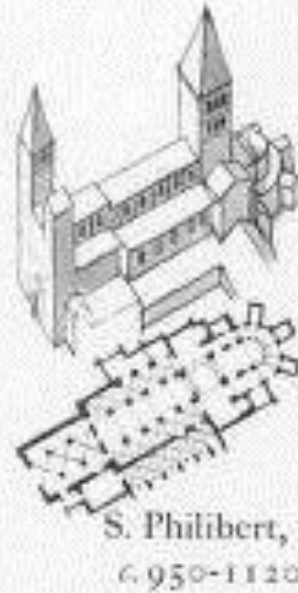
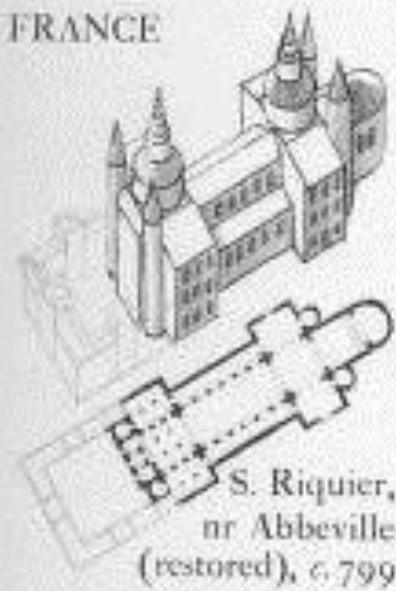
Abbaye-Aux-Hommes



Romanesque style

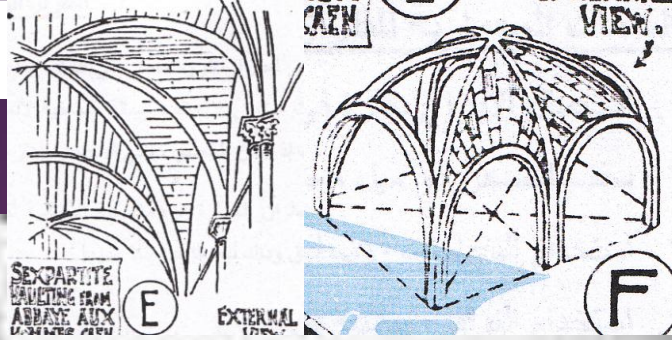
France

FRANCE

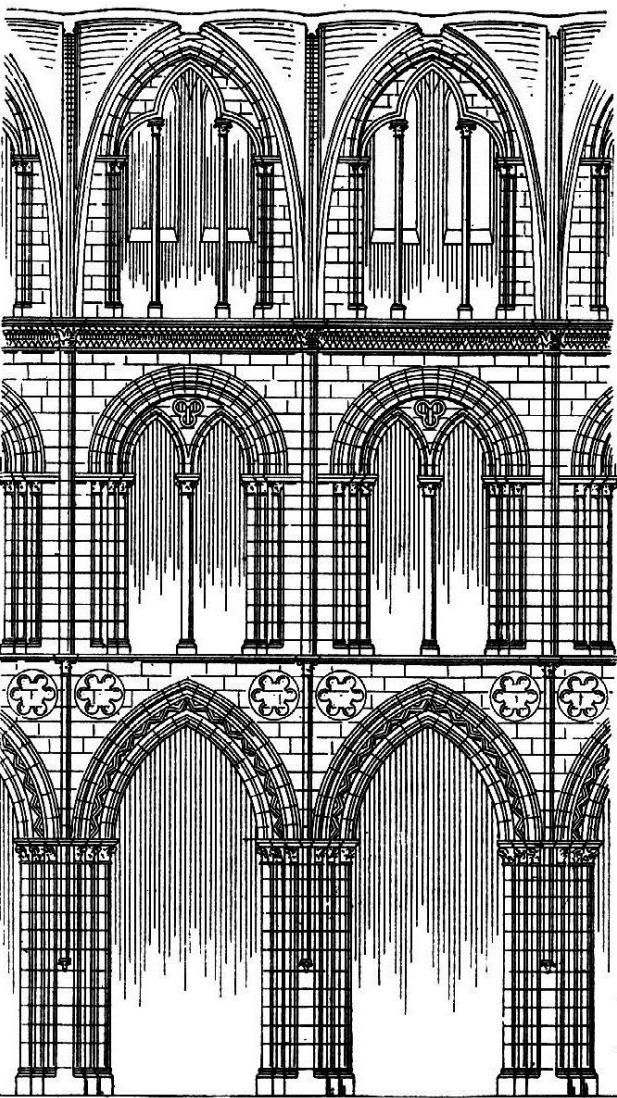


Romanesque style

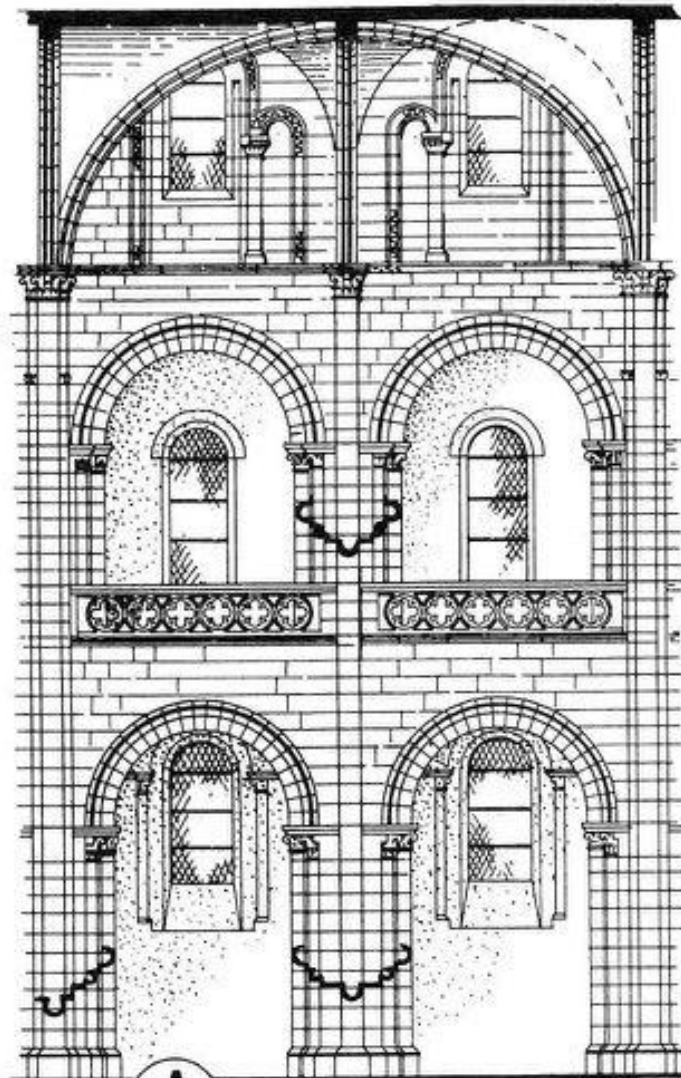
France



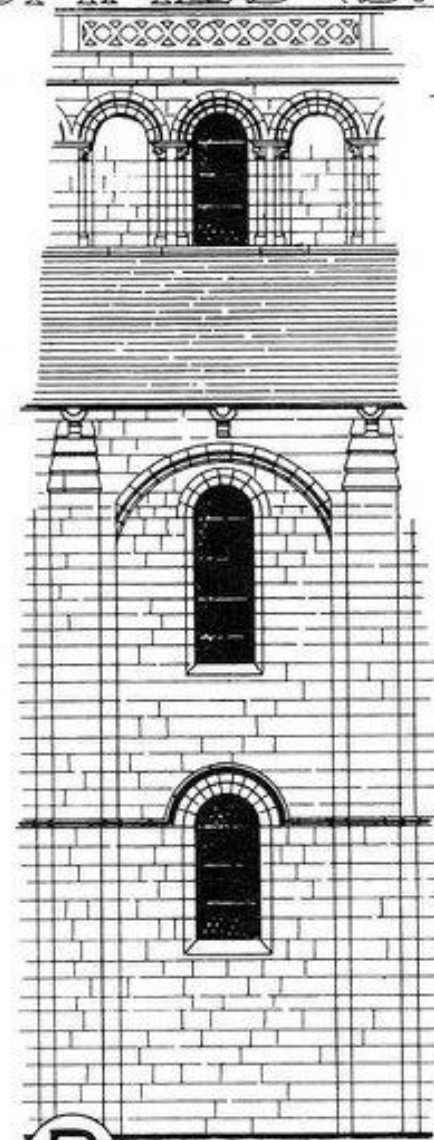
ABBAYE-AUX-HOMMES (S. ETIENNE): CAEN



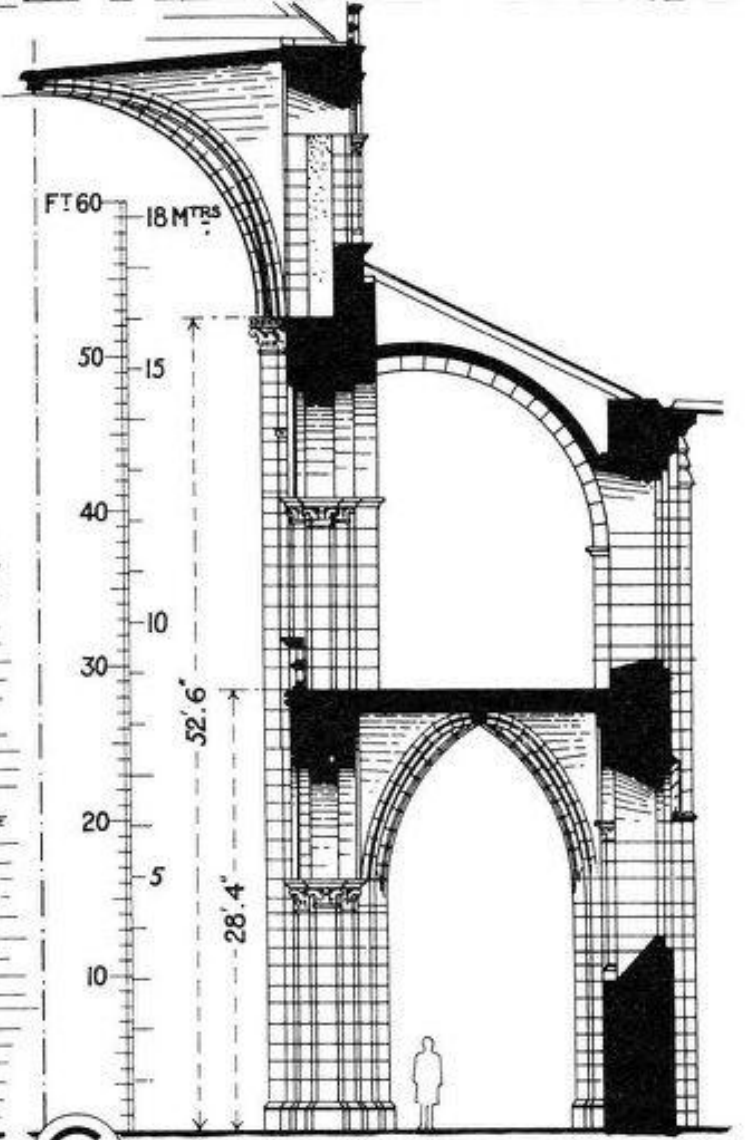
6. CAEN: SAINT ÉTIENNE, CHOR.



A NAVE BAYS (INT.)



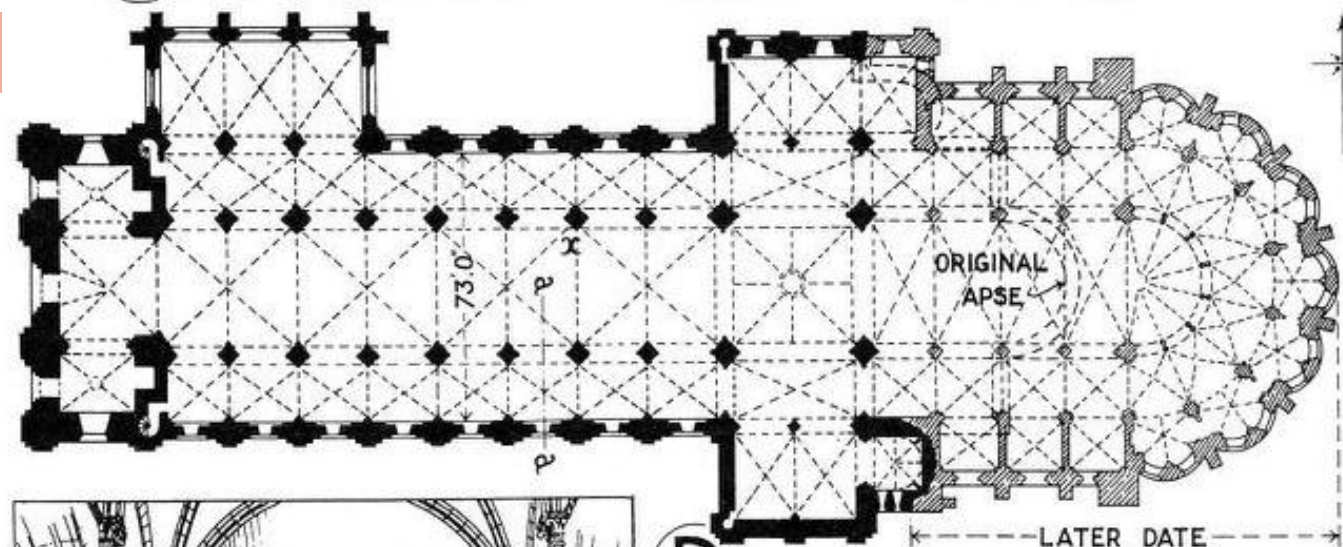
B NAVE BAY (EXT.)



C HALF TRANSVERSE SECTION aa

Romanesque style

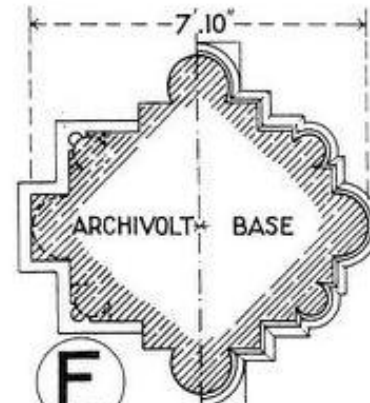
France



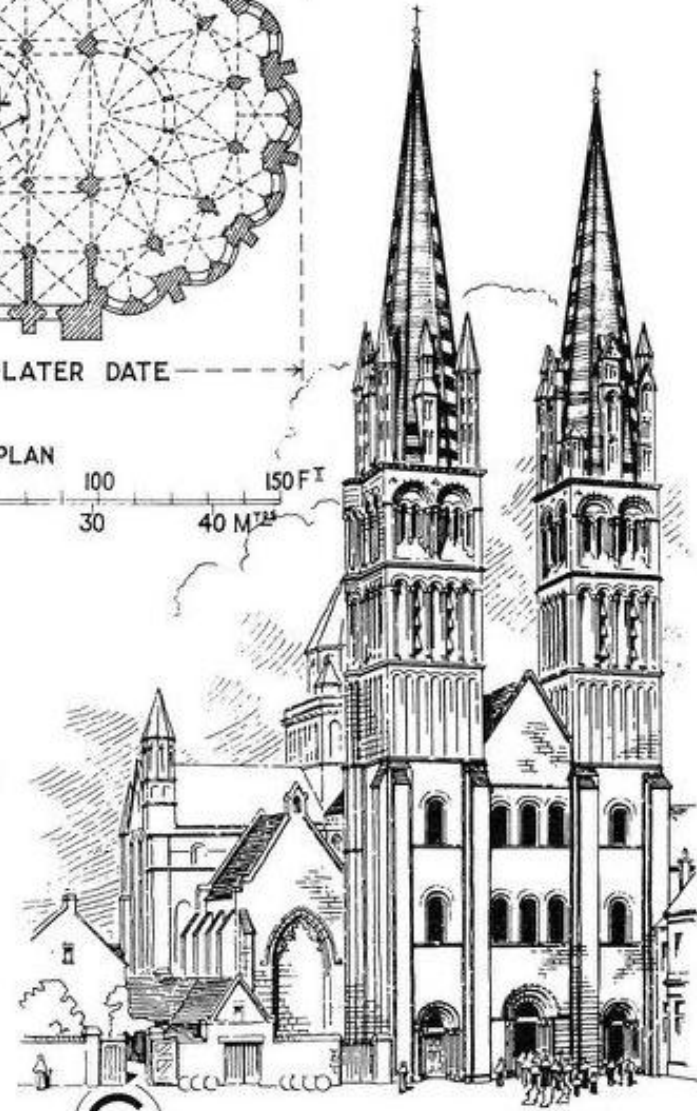
F INTERIOR LOOKING E.

D PLAN

SCALE FOR PLAN
10 0 50 100 150 FT
10 5 0 10 20 30 40 M^{TR}



E PLAN of PIER



G EXTERIOR FROM N.W.

العمارة فى العصور الوسطى
(الرومانسيك - القوطى) (٤٠٠-١٤٠٠ م)

Architecture (Romanesque - Gothic)
(400-1400 CE)

THANK YOU

Dr. Kamal Elgabalawy

THE REFERENCES TO MULTIPLE SOURCES ARE TEXT & FIGURES

(SKETCHES, DRAWINGS, PICTURES, PHOTOS,...ETC.)

ALL THE RIGHTS BELONG TO ORIGINAL AUTHORS